

# Hilman Rollers Kits & Sets are ideal for all kinds of heavy equipment moving, machinery installation and maintenance

## Hilman Rollers Kits & Sets



Easy and safe to use! Just lift the load, set the Rollers, and move. The recirculating chains on the Hilman Rollers provide controllable heavy moving right on ordinary flooring. Fully directional swivel tops allow equipment positioning in the tightest quarters. 3 and 8 ton Kits and Sets feature swivel padded rollers. 15 ton and higher Kits and Sets are available with your choice of swivel-locking padded rollers or rollers with swivel-locking diamond steel grid tops and loose Preload Pads.

KIT / SET CAPACITY (TONS)	EA. ROLLER CAPACITY (TONS)	PRODUCT NUMBER	WEIGHT LBS. KGS.		PRICE EACH
3	.75	KRS-3-4S (Kit)	56	25	
		RS-3-4S (Set)	43	19	
3	.75	KRS-3-2S/2R (Kit)	56	25	
		RS-3-2S/2R (Set)	42	19	
8	2	KRS-8-4S (Kit)	86	39	
		RS-8-4S (Set)	73	33	
8	2	KRS-8-2S/2R (Kit)	86	39	
		RS-8-2S/2R (Set)	72	33	
15	3.75	KRS-15-SLP (Kit)	196	89	
		RS-15-SLP (Set)	158	72	
15	3.75	KRS-15-SLD (Kit)	196	89	
		RS-15-SLD (Set)	158	72	
30	7.5	KRS-30-SLP (Kit)	208	94	
		RS-30-SLP (Set)	170	77	
30	7.5	KRS-30-SLD (Kit)	208	94	
		RS-30-SLD (Set)	170	77	
40	10	KRS-40-SLP (Kit)	212	96	
		RS-40-SLP (Set)	174	79	
40	10	KRS-40-SLD (Kit)	212	96	
		RS-40-SLD (Set)	174	79	
60	15	KRS-60-SLP (Kit)	248	112	
		RS-60-SLP (Set)	210	95	
60	15	KRS-60-SLD (Kit)	252	114	
		RS-60-SLD (Set)	214	97	

- Steel Chain-Action Rollers Move Equipment Over Ordinary Floors
- Included: 4 Chain-Action Hilman Rollers, 2 Steering Handles, 4 Preload Pads
- Kits Are Complete With Steel Storage Case  
Sets Are Without Case

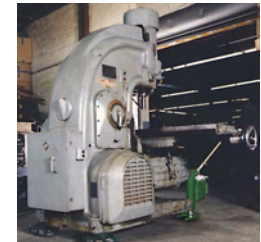


**HILMAN ROLLERS**  
WWW.HILMANROLLERS.COM

## Hilman Rollers Toe Jacks



- Lift Loads with Just 1 Inch Ground Clearance
- Pressure Valve Prevents Overloads
- 5 and 10 Ton Jacks Operate Horizontally and Vertically
- Lift Points on Both the Toe and Top of the Jack



Product No.	Capacity	Base Pick Up Position	Top Pick Up Position	Max Lift Height	Weight	Price
HTJ-5	5 metric ton	1" / 25mm	14.5" / 368mm	8" / 206mm	49 lbs / 22 kg	
HTJ-10	10 metric ton	1" / 25mm	16.25" / 413mm	9" / 233mm	69 lbs / 31 kg	
HTJ-25	25 metric ton	2" / 58mm	18.50" / 470mm	9" / 233mm	208 lbs / 94 kg	

- A Stable, 3-Point Heavy Moving System
- Protects Floor Finishes While Moving Heavy Loads
- Less Than 4 Inches High, Gives Tri-Glide a Low Center of Gravity
- Quick Assembly, With No Tools Required



## Hilman Rollers Tri-Glide

Product No.	Capacity	Price
Product No. KTG-6	6 Ton Tri-Glide Kit	
	Front Unit - 3 Ton Capacity Rear Dolly - 1.5 Ton Capacity (ea.) 48" Connection Bar	
Product No. KTG-12	12 Ton Tri-Glide Kit	
	Front Unit - 6 Ton Capacity Rear Dolly - 3 Ton Capacity (ea.) 48" Connection Bar	
Product No. KTG-18	18 Ton Tri-Glide Kit	
	Front Unit - 9 Ton Capacity Rear Dolly - 4.5 Ton Capacity (ea.) 48" Connection Bar	